



ملكة التوباز العالمية للتجارة ش.م.م

QUEEN TOPAZ

INTERNATIONAL TRADING CO. L.L.C

CARAVANS | CAMPS | CONSTRUCTIONS | TRADING

JSRS REGISTERED COMPANY

PREFAB & PERMENANT BUILDING SOLUTION PROVIDERS

SPECIALIZED IN CAMP SETUP WORKS ON TURNKEY BASIS

STEEL FABRICATION &CONTAINER CONVERSION

CIVIL &MEP WORKS

TRADING OF BUILDING MATERIALS

TABLE OF CONTENTS

COMPANY PROFILE	2
CAPABILITY REPORT	8
QUALITY POLICY	9
COMPANY DETAILS	11
HEALTH, SAFETY & ENVIRONMENT (HSE) POLICY	12
SAFETY MANUAL	13
MAJOR CLIENTS	14
PROJECT OVERVIEW (PHOTO)	16
DRAWINGS FOR STANDARD CABINS	18
TRADING DIVISION	20
REGISTRATION	21

COMPANY PROFILE

INTRODUCTION

About US

Queen Topaz International Trading & Contracting Co LLC was incorporated in the year 2016. We have four divisions with all amenities and expertise staff to cater ideal building solutions to the client in the form of prefabricated buildings and permanent buildings. There are four divisions in the corporate family of Queen Topaz International Trading & Contracting Co LLC which are comprised as

1. **Fabrication Division**
2. **Civil Construction Division**
3. **Electrical and Mechanical Division**
4. **Trading Division**

In the present engineering world, especially in the Middle East and Arabian Gulf, the solution for temporary housing is prefabricated building. In the field of offices, accommodation and villas, the prefabricated building are contributing a major supporting role in the fastest growing industry with its low cost, simply design and fast completion period

The portacabin requirement for a project in the initial stage for mobilization includes temporary housing for staff and labours, ablution block, catering etc. The prefabricated portacabins are of different types and sizes as per requirement, availability of space, purpose of necessity and as per statutory and regulatory requirements.

We are in the Excellent Category of Construction and Contracting Company which offer permanent building solutions in the range of multi-storey building, commercial building & villa. This division is well equipped and have well experienced engineers and expertise.

As supportive divisions to the construction solutions, we operate Electrical and Mechanical Division with excellent team capable of managing huge projects.

QT Construction, success over the years is due to its employee's dedication to excellent work, customer service that exceed expectations and a safety program that has led to zero accident hours. Honesty and open communication have empowered QT work force since day1, and it shows in our work. We provide profession client- focussed construction solutions. We go above and beyond on every project and deliver on our promises with integrity and industry leading excellence with every client we meet.

1. FABRICATION DIVISION

We offer a wide range of products that includes

- Sandwich Panel Cabins (Using PU/PIR Insulation)
- Steel portacabin
- Container Conversion (Using PS/Rockwool Insulation)
- GRP Portacabin
- Prefabricated structures
- Car Parking
- Industrial Sheds
- Modular office cabins
- Security cabins
- Pre Engineering Buildings

All units are factory assembled and delivered to the site incorporating electrical, sanitary, plumbing, pantry and other office furniture! ready to use by just connecting outlets to the main source. QT units can be relocated multiple times using crane or heavy duty forklift and are considered to be the best in the most rugged and remote condition sites exposed to harsh weather conditions.

QT manufactures and tailor makes a very wide range of portacabins based as per individual client specifications and requirements. Our portacabins are mainly used at oil field sites with customized specifications like PDO, OXY,

BP, DALEEL PETROLIUM ,ORPIC , DRY DOCK ,DUQM REFINARY and OPEL Standard .QT steel framed building gives you many advantages including quick production, easy transportation, assembling and economic price.

B) TURNKEY SOLUTION :(CAMP SET UP WORK)



We offer Turnkey solutions to the clients for their office set ups and labor accommodation in their allocated locations. Client has to provide only the approved land for the construction of office and accommodation, QT will construct entire amenities as per the client choice with minimum time and cost

This Works starts from the Manufacturing of the Portacabin and supply and installation at site , Grading ,levelling and compacting of site area ,Construction of Foundations, Cabin Anchoring ,Steps, Chain link Fencing ,Gates, Pathways ,Graded Road ,AC Foundations ,Car Parking ,Water

tank structure and Installation ,Excavation and Installation of Holding tank ,Construction of Manholes ,Aggregate spreading ,Water networks , Drainage Networks , Electrical works like Panel Installation, Supply and Laying of Armoured cable from Gen set to MDBs,SMDBs to DBs including sand bedding ,Caution tap etc with complete installation ,Earthing Installation, External Lighting Installation etc

C) CONTAINER SOLUTIONS:



Shipping containers are versatile units that are strong, secure and weather tight. QT converts shipping containers which offer ideal building, solutions when operating in harsh environments. Converted containers can be of standard design or customized to meet the client’s specification. The internals of the containers are provided with Rockwool / Polyurethane / Polyisocynurate sandwich panels with varied metal skin specification finishes which are ideal for applications in Oil & Gas Industry, Offshore / Onshore units, Military Facilities ,General Construction Sites , Mining Industry, Substation Shelters and other Working /Living facilities in remote and harsh environments.

D) SPECIALIZED SHELTERS



QT is specialized in manufacturing shelters which adhere to International Standards and which are custom built as per client’s specific requirements for diversified range and caters to GSM telecom shelters, radar & radio equipment shelters, ambient air quality monitoring shelters, airport shelters, Transformer & Switch gear sub- station enclosures, mobile abattoir units , Cell on Wheels (COW), Rapid Deployment Units (RDU) and Explosion proof shelters used in Hazardous areas of Zone 1 & 2 for the oil & gas industry with complete fit outs of electrical fixtures - standard or explosion proof along with cable ladder / trays , Air Condition system either split or package , fire alarm detection and suppression system , Intruder Alarm system, Roxeltec Cable entries all of which are factory assembled , integrated, tested and commissioned.

- Modular portable buildings
- Temporary marketing suites
- Class rooms for schools and colleges
- Flat pack buildings

Temporary warehousing and storage Ballistic proof building.

E) STEEL CABINS :



Steel cabins are normally used for rig camps which can be built as per the client requirement .The main advantage of these type of cabins are its long life and fully fire rating as its outside wall shall be 3mm MS sheet with fire rated emulsion paint .This type of cabins are also used in war zones .Different types of steel cabins are Bullet proof security cabins Vandal proof Secure buildings Armoured and secure storage Secure bike store Secure garden store

F) INDUSTRIAL SHEDS & STEEL FABRICATION



We offer prefabricated industrial sheds as per the client specification and drawings .Relying on our wide experience and expertise in this filed the company has grown significantly and has consistently delivered products that exceeds the expectations of its clients

Different types of sheds which we had constructed Workshop ware house, Vehicle servicing shed, Medical facilities ware house, Swimming pool shade, Steel stadium shades ,Lift structure ,Steel workshops, Car parking ect.

2. CIVIL CONSTRUCTION

Excellent Category of Construction and Contracting Company comprising the work in value in general all civil work particularly in the construction and multi-storey building, commercial building, villa and building commercial service. This division is well equipped and having a good experienced engineer and expertise. We offer the following services.

- Building construction
- Earth works
- All types of foundation works
- Concrete works
- Plastering works
- Block laying works
- Asphalt paving
- Land scaping
- Carpentry works
- Gypsum board partition and ceiling works

3. ELETRICAL AND MECHANICAL

QT carry out electrical works as a full range of electrical installations in retail, industrial, commercial, municipal, residential, education and food services.

Our service range is

A). Electrical

- Commercial , Industrial, Residential Wiring
- Generators and Emergency Power
- Site lighting and Power
- High Bay Lighting
- Control Wiring
- Panel Board Installation Work
- Troubleshooting
- Supply and Installation of Switch Gears
- Cable Laying and Street Lighting Works

B) HVAC

We are offering all the solution of HVAC in Domestic Commercial and Industrial areas.

- Design and Engineering
- Supply and installation
- Testing and Commissioning
- Service and Maintenance

C) Fire Protection and Fighting.

Our service range is:

- Supply and Installation of Fire Protection and Fire Fighting Systems
- Fire Pump
- Fire Extinguisher
- Smoke Detector
- Heat Detector
- Fire Hose Cabinet

4. BUILDING MATERIAL TRADING

We are at the forefront of supplying wide range of building materials, hardware items ,electrical and plumbing items for all kinds of applications and uses at competitive prices .We also trade marble locally and import from different countries around the globe . Our expertise has since vastly expanded to supporting other type of clientele especially construction companies to indulge them in the safety and feasibility of our services.

CAPABILITY REPORT

Queen Topaz is manufacturing its production in 10000 Sqm production area located in Baraka , Based in Sultanate of Oman with 85 skilled labours, 8 Supervisors and 5 engineers by the support of well experienced management team. All the work force employed by the company are well qualified and experienced in their respective fields. QT has equipped with all Morden machineries equipment gives better quality and finish which we can offer to our clients. Our cabins are built with a strict adhere to quality control, fire regulation and safety requirements, minimal maintenance over the duration of their use.

Cabins are built to local legislation for structure, Local climatic protection and environmental concerns. As with all our products we using only the best components with international safety to ensure cabins exceeds even the highest inspection standards so whether it be for PDO, OXY, Daleel Petroleum, BP,ORPIC etc .We can provide the quality standards, no matter where, no matter when.

We have a well experienced team for the construction of villas, mosque and all other type of commercial buildings with sound enough engineers, supervisors and skilled labours as a team to achieve the target in time. We also make contracts for repair and maintenance of the commercial buildings, earth works, concrete work, all types of foundation works, Landscape, structural concrete works, block laying work, plastering work ,painting works ,asphalt paving, car parking work, carpentry work, gypsum board partition and ceiling works

QT carry out electrical works as a full range of electrical installations in retail, industrial, commercial, municipal, residential, education and food services.

We are offering all the solution of HVAC in domestic, commercial and industrial area. We are expertise in design and engineering, supply, installation testing, service and maintenance.

Fire protection and fighting is also an important service offering by us to cater the client. Some of the steps involved in its work process as

Supply and installation of fire protection and fire fighting system, fire pump fire extinguisher, smoke dictator, heat dictator fire hose cabinet.

QUALITY POLICY

QUALITY CONTROL

M/s. Queen Topaz endeavours to provide high quality products at affordable prices, designed to achieve complete customer satisfaction. All functions are geared to meet the requirements of the quality management system. A good marketing department helps in understanding customers' needs better resulting in effective execution of jobs. We strive to remain in the organisation of First Choice in all our products & Services.

Quality Objective:

- Establish and monitor at all stages quality system based on the international guidelines.
- Regular review of our product and services, feedback from working manpower system to deliver the improved quality products.
- Offer our clients excellent services, innovative product usage in end products with value added to deliver to them for mutual benefit of both.
- Educating and creating awareness of demonstration vision, professionalism, transparency and integrity in conduct of our business and product service.
- Vouch on disciplined growth and reasonable profitability during operation of business in sound and healthy finance base.
- Encouraging /motivating self-thinking and dedication among human resources to protect the management interests in accordance to the implementation of government policies and objectives transferred in the trade circle.
- Contribute the eligible share from the market to the management from the community of trade activity.

Quality Implementation:

The manufacturing process is monitored at all stages to ensure that quality as well as safety procedures are followed. Efficient utilization of material and manpower is achieved by maintaining high standards in quality control. Timely completion and delivery is also achieved within the constraints of cost and quality.

After a contract is signed, the client is briefed on the types of materials being used and samples of the major materials for the project are made available to the client. On receipt of the client's approval, the materials are procured and subjected to stringent quality checks. Even the slightest variation in quality of materials is not tolerated, as material is the most important element of production.

A detailed job instruction is prepared by the Department and sent to the Works along with a copy of Bill of Quantity (BOQ), which specifies the type, quality and quantity of materials to be used. This ensures that the Stores issue the right material to a particular job. The Machines are routinely checked so that they are fit for use and the Works Supervisor scrutinizes the BOQ for doubts if any. Then the job commences on issue of his instructions. He ensures that accuracy is maintained and that defective wood works are discarded while following the actual design and specifications. The finishing section follows the detailed instructions on the specific type of finishing to be done and maintains a separate record on the time taken for sanding, painting, etc.

In Steel Fabrication jobs, the quality of steel members and specification required are verified before they are issued to jobs. The Section Supervisor ensures that the quality of work is proper. The above detailed procedure followed by the company assures the quality of the final product.

Quality Control:

Stringent quality controls and checks are carried out at the works to ensure that the products meet the required high standards. All workers are made aware of their responsibilities in maintaining the required standards in quality through quality training and guidance. Quality audit is undertaken as an integral part of the manufacturing process beginning from the raw material stage to the finished product stage.

COMPANY DETAILS

Registered Name	M/s.QUEEN TOPAZ INTERNATIONAL TRADING & CONTRACTING CO LLC
Registered Address	PO. Box - 1067 Postal Code- 130 AZAIBA, Sultanate of Oman
Telefax	+968 22024613
Telephone	+968 22024613
Website	www.queentopaz.com
Office Address	Building No-271/1, Street No-196 Flat No. 26 Near Oman LNG Office Gala, Sultanate of Oman.
Sponsor	Zawan Hamood Salim Al Jardani
Managing Director	Noushith Panoli
Contact person in sales	Shine K Sadanandan (GSM: +968-99845439, 97665454)
Bankers	M/s.Queen Topaz International Trading Co LLC Al Yusr Islamic Banking Al- Athaiba Branch Sultanate of Oman A/C. No. 10000305490001

HEALTH, SAFETY & ENVIRONMENT (HSE)

All employees are made aware of the HSE policy through a program of training. For employees working in PDO areas HSE & H₂S training is made compulsory. All Drivers are given HSE, H₂S, PDO Black Top & Graded Training.

All the laws and statutory requirements of the Sultanate of Oman are strictly adhered to. The company is fully committed to ensure, as far as the situation reasonably demands, the health, safety and welfare of all its employees, and also all others who may be involved directly or otherwise in its operations including wherever applicable, the general public.

Works Manager & Supervisors are provided with Safety Manual. The Safety Manual is also issued to Sub-Contractors and the Project Manager monitors its implementation.

It is the objective of the Company to create awareness about Safety among all Employees.

The employees are educated on all the necessary precautions that need to be taken while carrying out their duties so that a sense of commitment and responsibility towards safety is inculcated.

The Safety measures include safety alert posters that serve as reminders to

Continuous product optimisation is achieved through constant process and structure review. Potential health and safety and environmental hazards are thus detected and minimized, guaranteeing the customer the most advanced technology and a high-quality product.

Once a project is awarded a strict quality monitoring procedure is availed by the staff members right from the machineries and materials procured for the job till the completion of the work, the surety of the woodworks, frameworks (steel fabrication), bearing , internal wirings are kept very well monitored with the result of ensuring the best quality delivered to our client.

We ensure our development to bring the best level of comfort and endurance to our clients

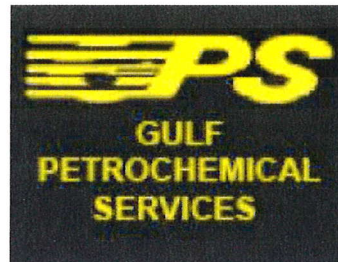
SAFETY MANUAL

The responsibility for implementing the Safety Policies of the Company lies with the Works Manager. The Works Manager and the Site Supervisors ensures that the safety guidelines and procedures are followed at each site.

The Works Manager's responsibilities are:

- To make sure that safe method of work and proper welfare clauses are incorporated in tenders.
- To promote awareness and enlist the support and co-operation of the sub-contractors in implementing the safety policy.
- To determine the risks and therefore the safest method of working for each job at the planning stage itself and taking the necessary measures including choosing the suitable plant, protective clothing, adequate lighting, etc.
- To direct all the employees including senior management staff to wear the required safety equipment's like helmet, protective clothing, etc.
- To minimize the risks involved to the employees and the general public by following all the standard safety instructions.
- To instruct the Supervisors, Charge-hands and Gangers as to the correct methods of work to be followed so that workers do not take avoidable risks.
- To ensure proper maintenance of machinery, electrical fixtures, fittings and equipment, power tools and hand tools.
- To maintain the required stocks of safety equipment, materials and protective clothing and ensuring their strict and regular usage.
- To provide all the necessary first aid facilities and also be geared up to provide quick ambulance and hospital access in an emergency.
- To investigate the reasons for safety lapses if and when they occur and to fix responsibilities and enforce strict discipline if the failure to observe safety guidelines is due to negligence or carelessness.

SOME MAJOR CLIENTS





الحدیثة للخدمات النفطية ش.م.ع.م
AL HADITHA PETROLEUM SERVICES S.A.O.C



الحسن
al Hassan



MINISTRY OF HEALTH

بهوان للمشروعات والاتصالات ش.م.م
Bahwan Projects & Telecoms LLC



Zawawi
P/E Powertech Engineering L.L.C.

KAS

Delivering Excellence

شركة خالد بن أحمد وأولاده ش.م.م
Khalid Bin Ahmed & Sons LLC



نجد الأهلية
NAJED AL AHLIYA



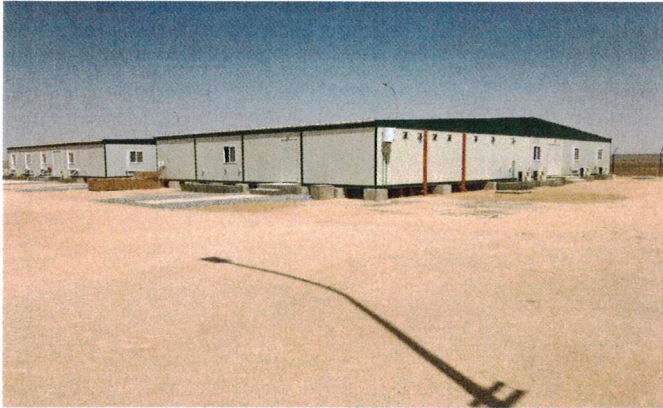
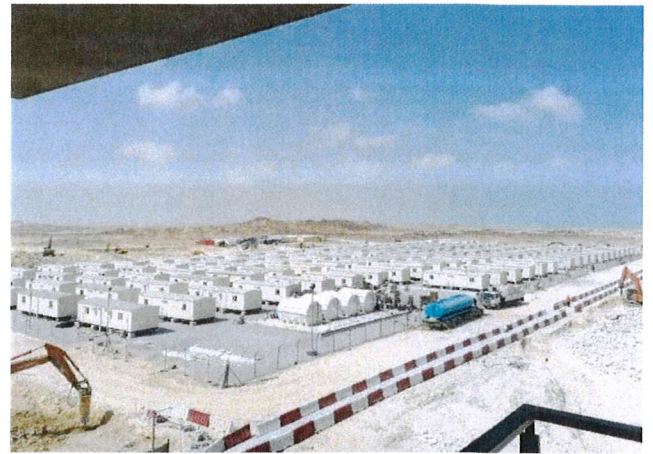
Occidental of Oman Inc.
أوكسيدنتال عمان انكربوريد

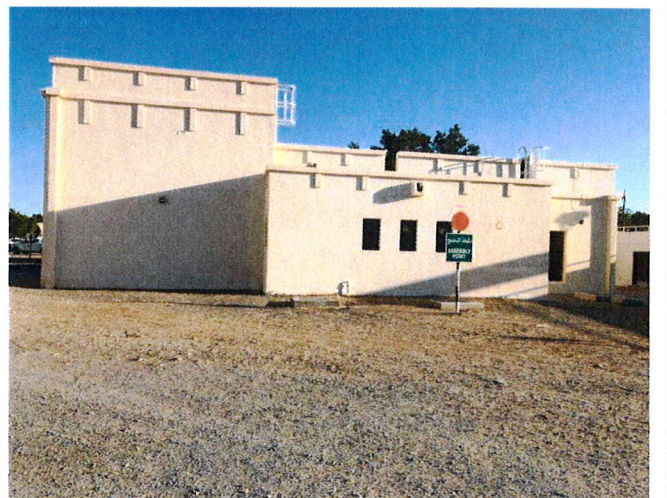
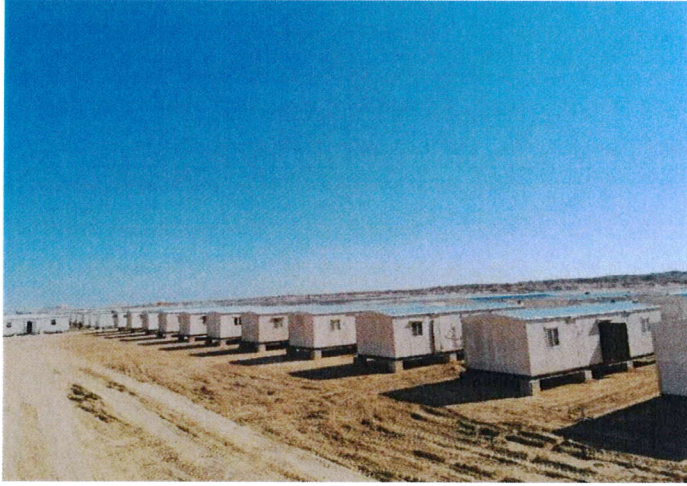


Rekaz Engineering Projects

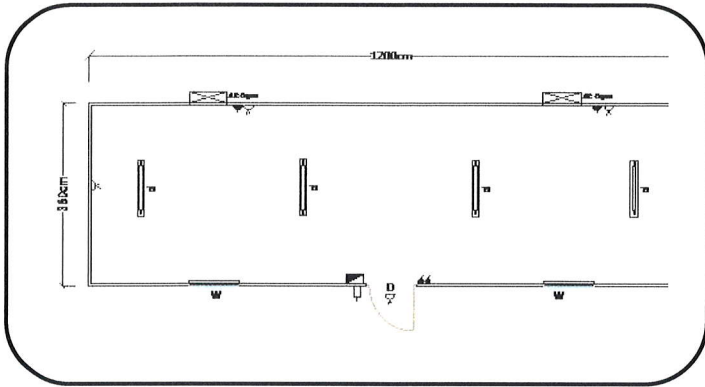
دليل النفط ش.م.م.
DALEEL PETROLEUM L.L.C.

PROJECT OVERVIEW (PHOTOS)

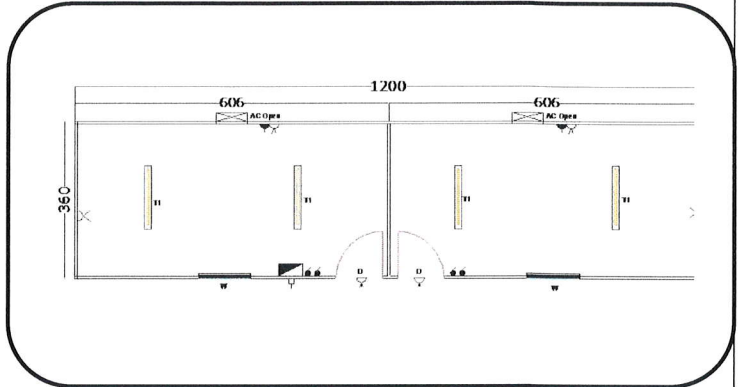




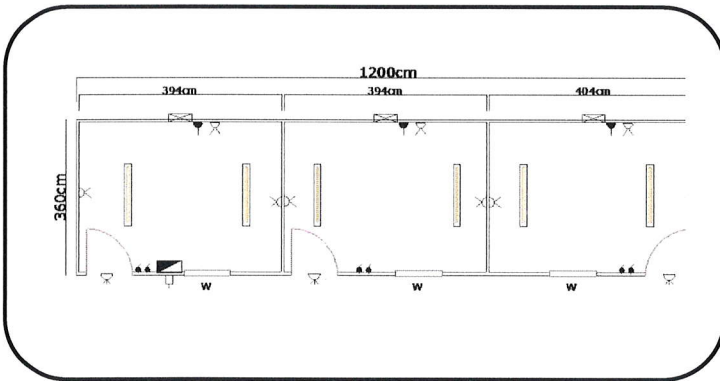
DRAWINGS FOR STANDARD CABINS



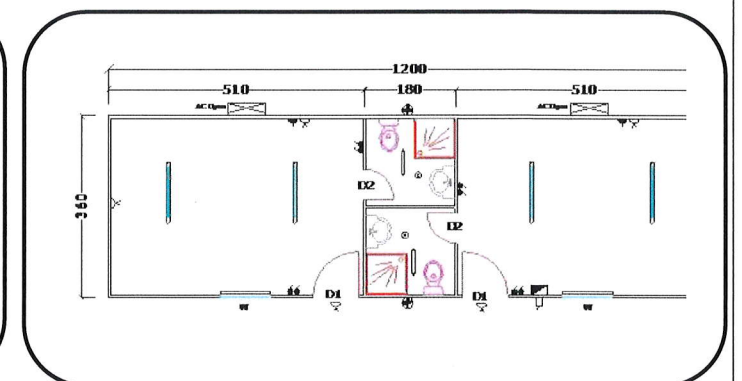
OPEN HALL



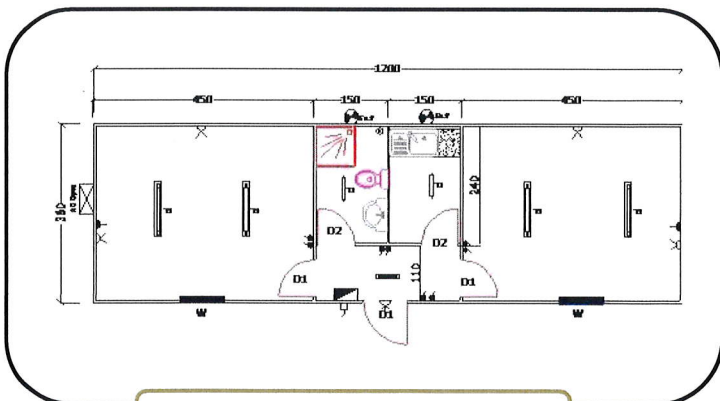
TWO ROOM



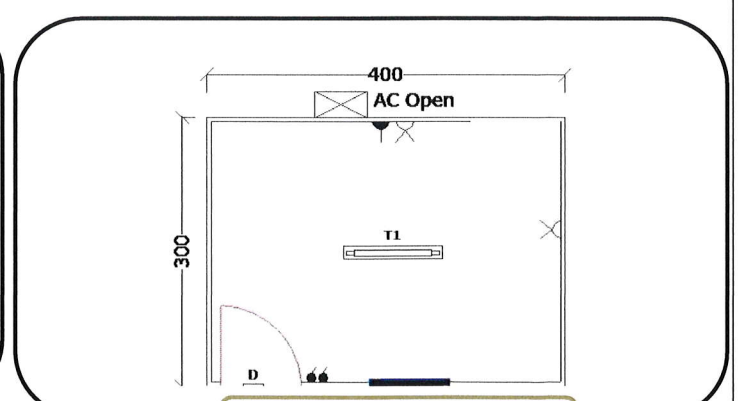
THREE ROOM



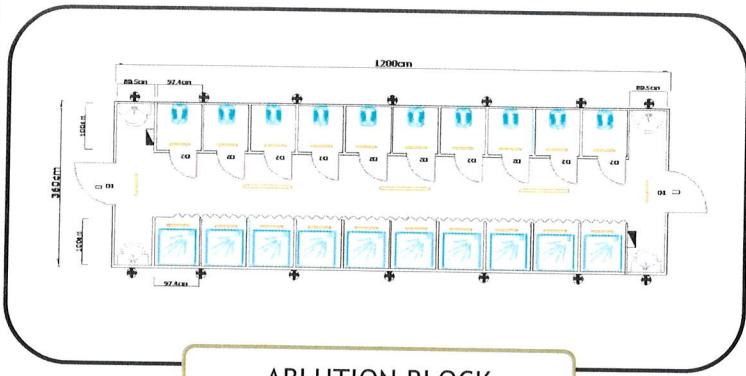
TWO ROOM+ TWO TOILETS



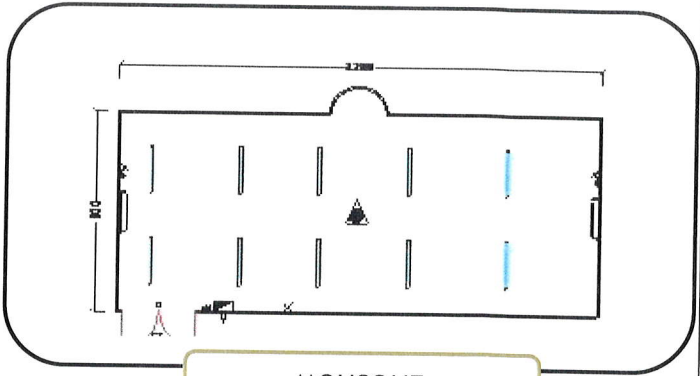
TWO ROOM + TOILET &



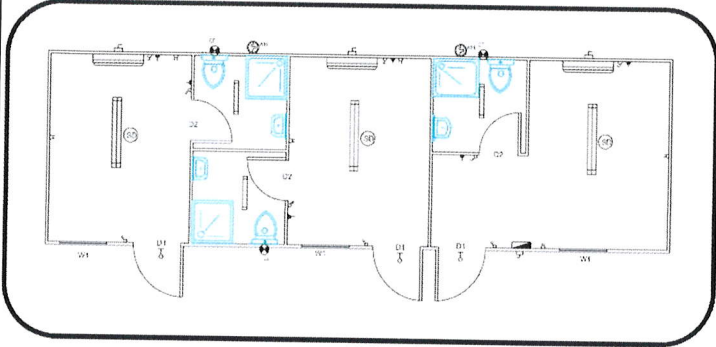
SECURITY CABIN



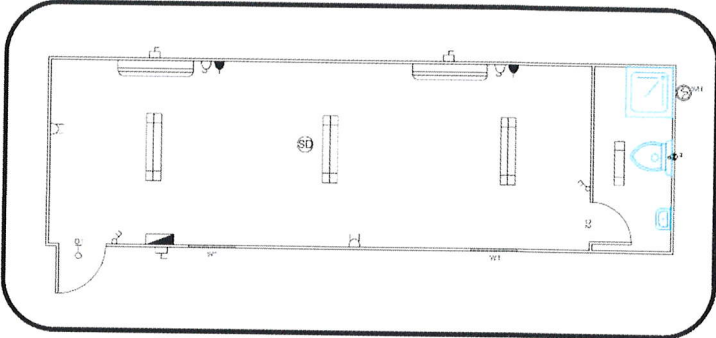
ABLUTION BLOCK



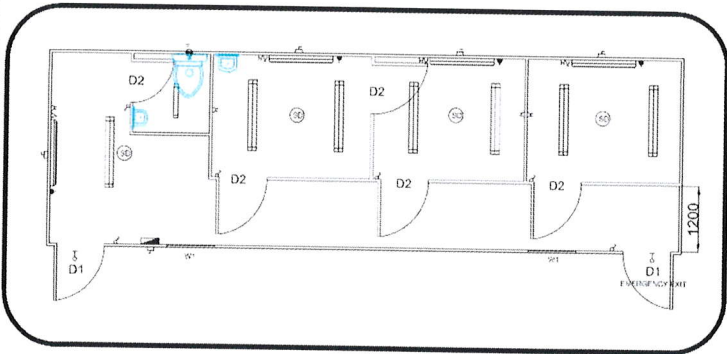
MOUSQUE



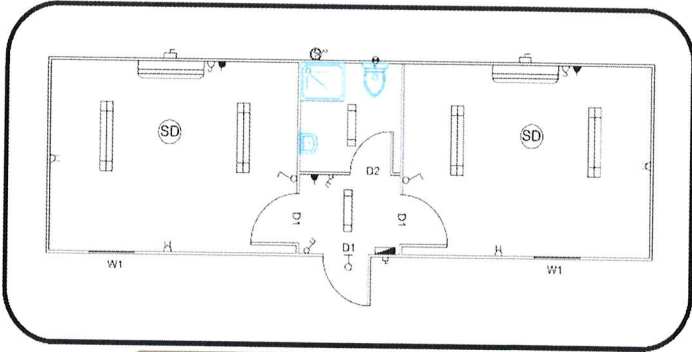
THREE ROOM + THREE TOILET



ONE ROOM + TOILET

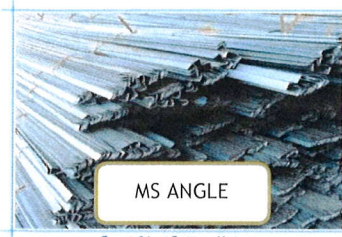


CLINIC



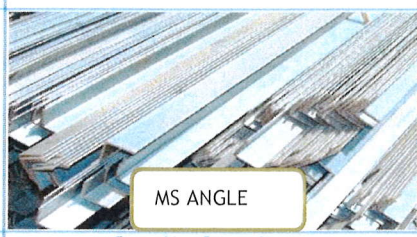
TWO ROOM + PANTRY

TRADING MATERIALS



MS ANGLE

Pearl Steel Rolling Mills



MS ANGLE

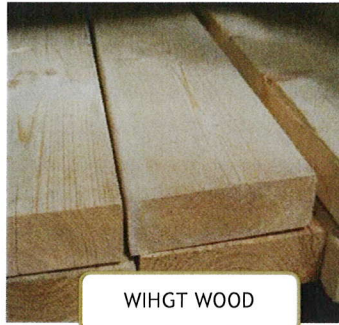
Pearl Steel Rolling Mills



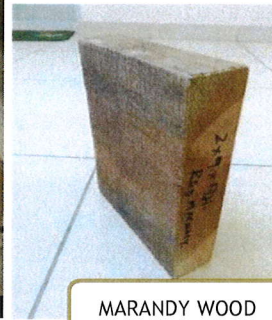
MS C- CHANNEL



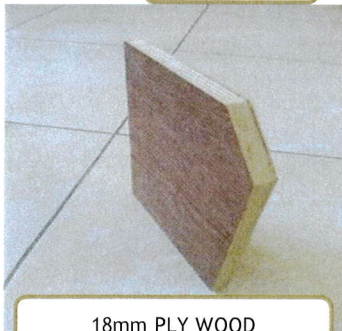
I BEAMS



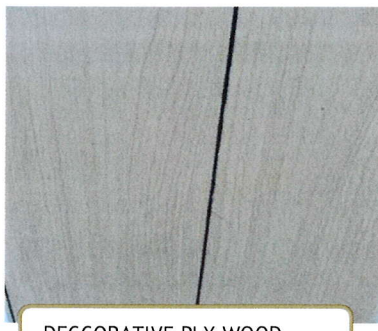
WIHGT WOOD



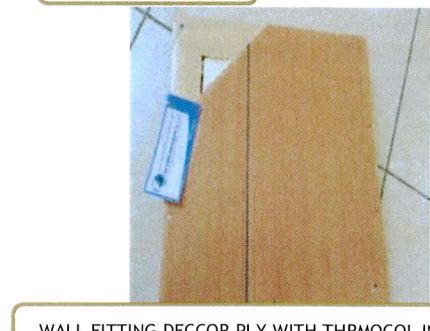
MARANDY WOOD



18mm PLY WOOD



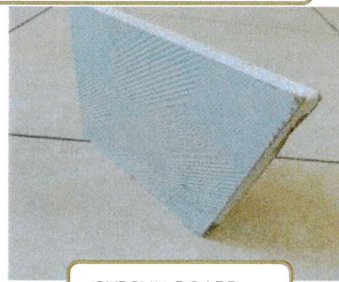
DECCORATIVE PLY WOOD



WALL FITTING DECCOR PLY WITH THRMOCOL INSUL



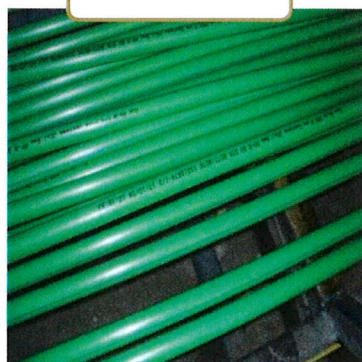
SANDWITCH



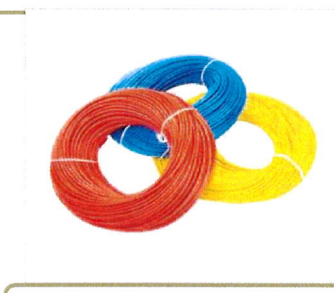
GYPSUM BOARD



PPR PLUMBING FITTING



PPR PIPE



OMAN WIRE



SANATRY ITEM